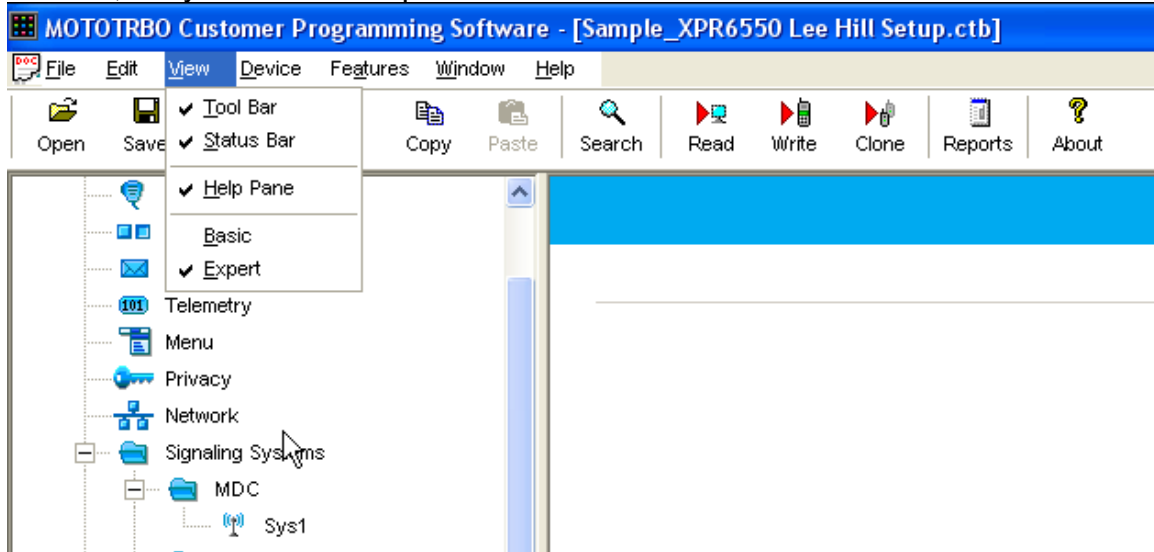
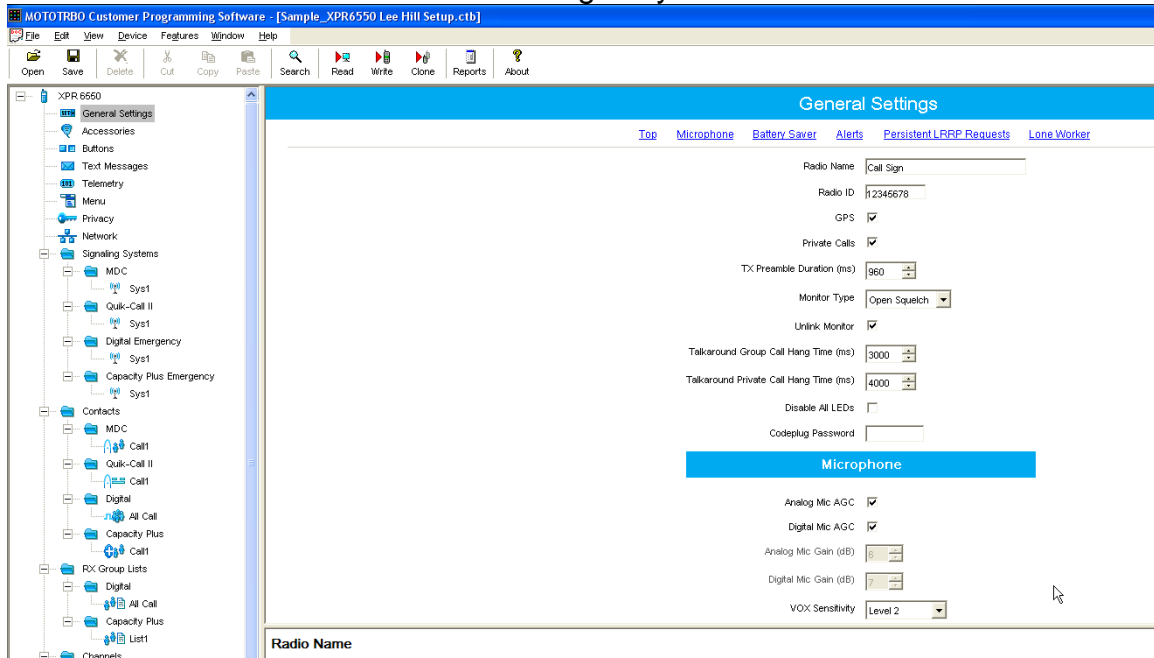


This guide assumes that you already know how to program your handheld to do it's basic functions, this will only give you the needed options to make your radio work on the Lee Hill system.

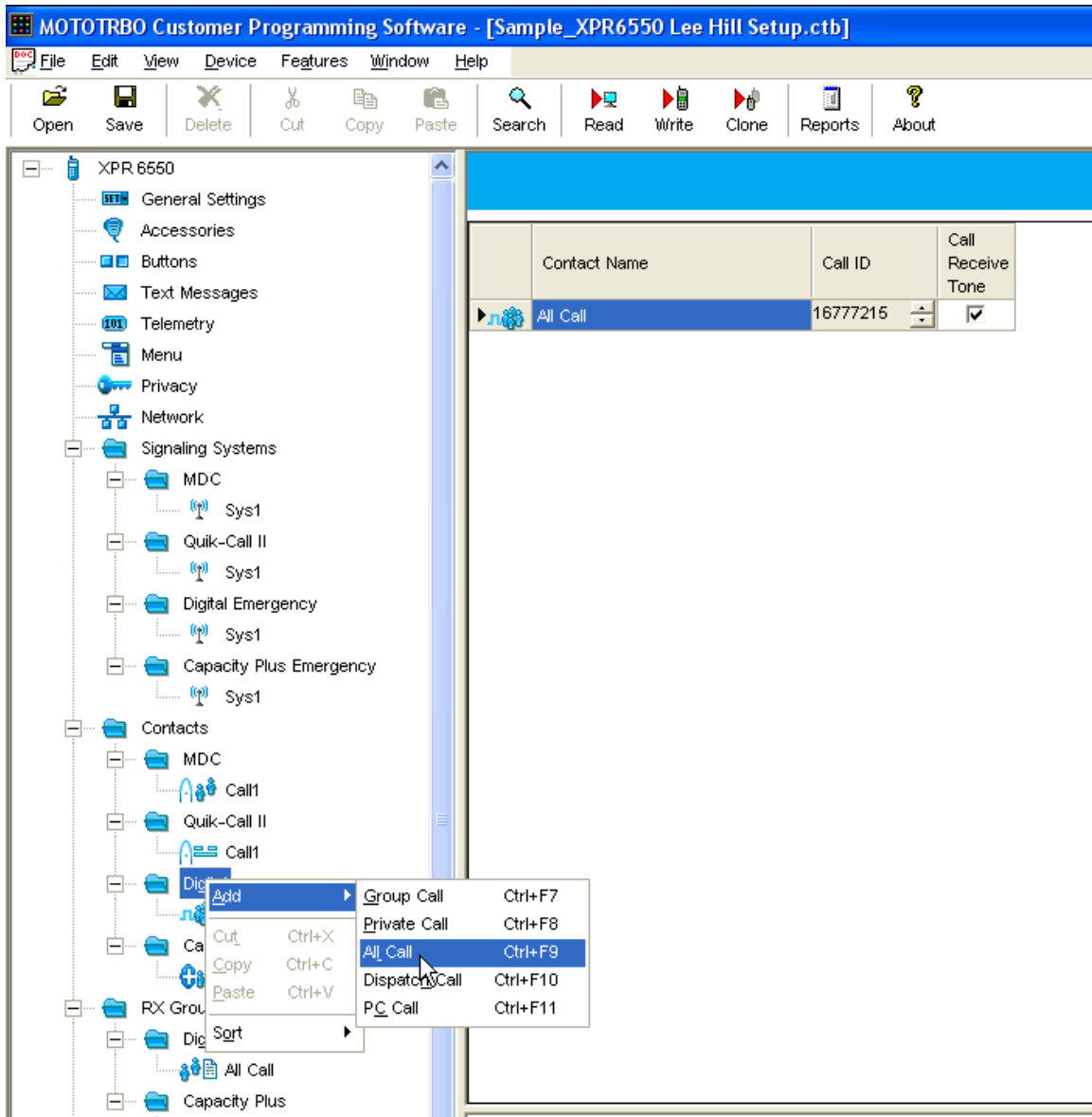
First off, set your CPS to Expert Mode:



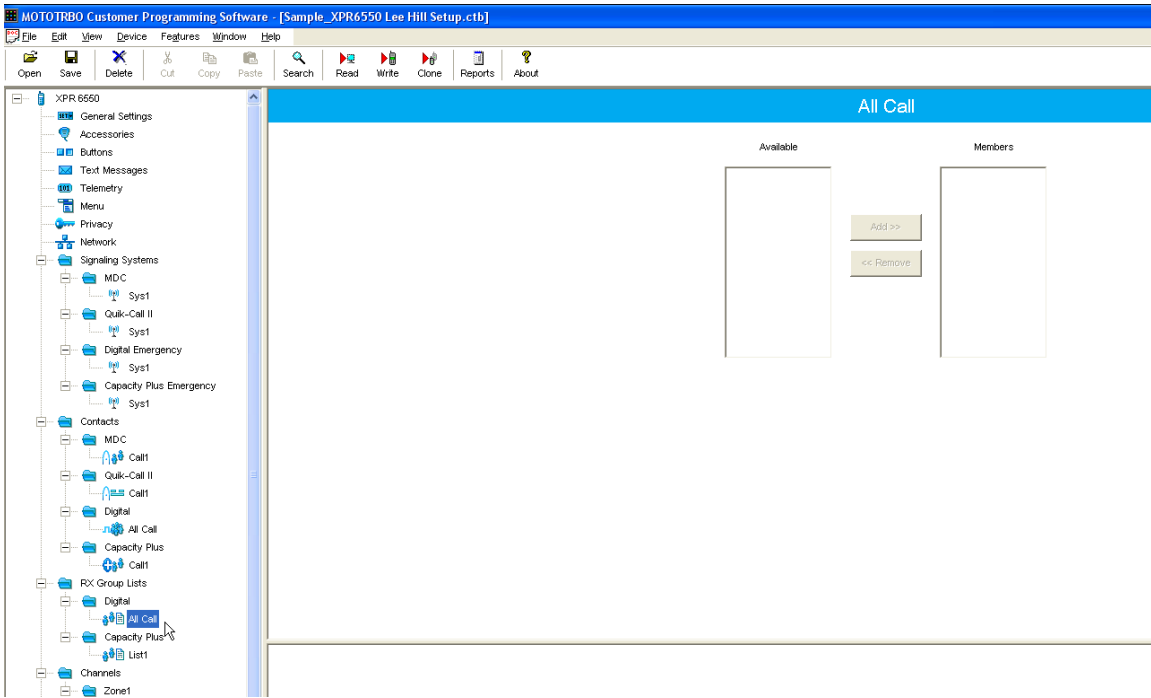
Configure your Radio Name and Radio ID as per your instructions, radio ID should be random or whatever RMHAM gave you to use in there.



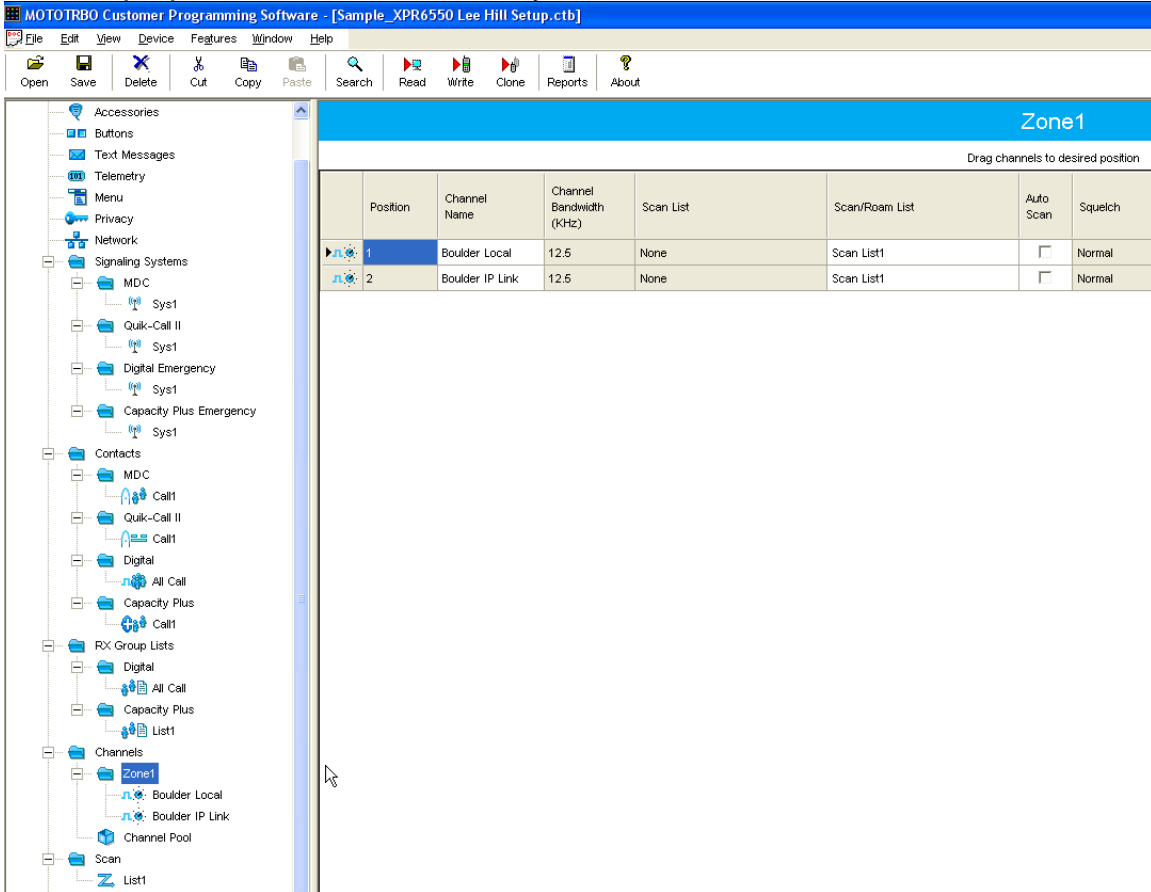
Add A Contact under Digital, by right clicking digital, ADD, ALL CALL, and Rename it to All Call.



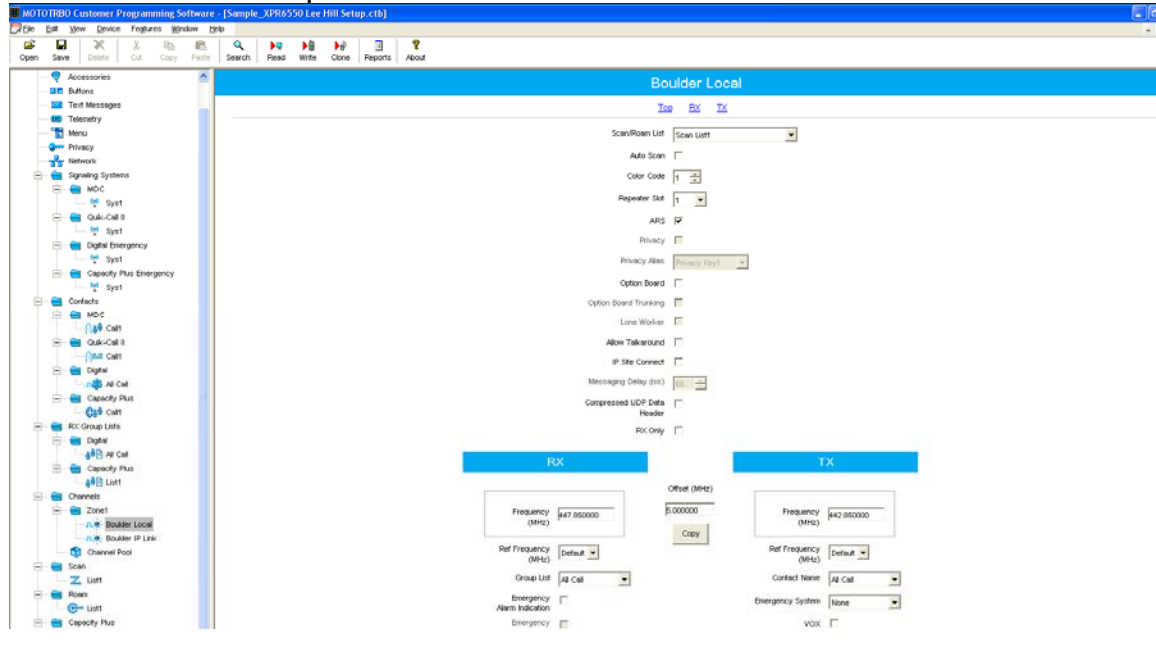
Add A RX Group List under digital and rename it to "All Call"



Add the proper channels to the Zone you wish to add the channel to:



The Boulder Local repeater is as below:



RX

Frequency (MHz)

Ref Frequency (MHz)

Group List

Emergency Alarm Indication

Emergency Alarm Ack

Emergency Call Indication

Offset (MHz)

TX

Frequency (MHz)

Ref Frequency (MHz)

Contact Name

Emergency System

VOX

Power Level

TOT (sec)

TOT Rekey Delay (sec)

Allow Interruption

TX Interruptible Frequencies

Admit Criteria

In Call Criteria

GPS Revert

Private Call Confirmed

Data Call Confirmed

The Boulder IP Link is as below:

Boulder IP Link

[Top](#) [RX](#) [TX](#)

Scan/Roam List

Auto Scan

Color Code

Repeater Slot

ARS

Privacy

Privacy Alias

Option Board

Option Board Trunking

Lone Worker

Allow Talkaround

IP Site Connect

Messaging Delay (ms)

Compressed UDP Data Header

RX Only

RX

Frequency (MHz)

Ref Frequency (MHz)

Group List

Emergency Alarm Indication

Emergency

Offset (MHz)

Copy

TX

Frequency (MHz)

Ref Frequency (MHz)

Contact Name

Emergency System

VOX

RX

Frequency (MHz)

Ref Frequency (MHz)

Group List

Emergency Alarm Indication

Emergency Alarm Ack

Emergency Call Indication

Offset (MHz)

Copy

TX

Frequency (MHz)

Ref Frequency (MHz)

Contact Name

Emergency System

VOX

Power Level

TOT (sec)

TOT Rekey Delay (sec)

Allow Interruption

TX Interruptible Frequencies

Admit Criteria

In Call Criteria

GPS Revert

Private Call Confirmed

Data Call Confirmed